

Comfort-Aire®



TARG

Electric/Electric Packaged Unit 14 SEER

SPECIFICATIONS

REFRIGERANT SYSTEM

- Environmentally friendly R410A refrigerant
- Copper tubing with enhanced fin coils
- Internal service gauge ports

CABINET CONSTRUCTION

- Rounded corners for safety and an attractive, clean appearance
- One piece base design for strength and stability
- Drain ports for condensate management and coil runoff
- Low profile, with compact footprint
- Insulation to minimize heat loss plus reduce sound
- Textured pre-painted steel cabinet finish
- Superior service access to components
- One piece “no leak” top design

BLOWER

- Insulated compartment to reduce sound
- Efficient multispeed motor for wide airflow range
- Slide out blower housing for easy service

INSTALLATION

- Horizontal or down discharge capable
- Utility connections on “right side”
- Tabbed duct flanges for simple duct connections

WARRANTY

Standard warranty or Extended warranty available with product registration. See warranty document for details or visit www.marsdelivers.com

MODEL NUMBER GUIDE

T	A	R	G	24	00	1	M
Package Unit	Electric/ Electric	Residential	'Green' Gas R-410A	Nominal Cooling Capacity BTUH x 1000	Heating BTUH No factory installed electric heat	Power 208/230-1-60	Series/ Revision

ELECTRICAL AND PHYSICAL DATA

Model	Voltage	Phase	Hz	Min Volts @ 60 hz	MCA	Max Fuse/ HACR Breaker	Compressor		Condenser Motor		Blower Motor		Refrig. Charge (oz.)	Weight (lbs.)
							RLA	LRA	RLA	HP	RLA	HP		
TARG24001M	208-230	1	60	197	16.7	25	11.2	60.8	1.0	1/6	1.7	1/3	70	313
TARG36001M					20.6	30	14.1	72.2			2.0	1/3	79	333
TARG42001M					24.4	40	15.9	85	1.7	1/4	2.8	1/3	108	402
TARG48001M					26.9	40	17.9	96			2.8	1/2	106	406
TARG60001M					38.9	60	23.7	152.5			7.6	1	125	445

PERFORMANCE

Model	Cooling					Sound dBA
	Rated AHRI Capacity Btuh	SEER	EER	Rated Sensible Capacity Btuh	CFM	
TARG24001M	22,600	14.0	11.0	16,500	800	78
TARG36001M	34,000			25,800	1200	
TARG42001M	40,000			30,000	1400	
TARG48001M	46,000			35,000	1600	
TARG60001M	57,000			41,600	1800	

Units certified in accordance with Unitary Air Conditioner Certification Program, which is based on AHRI Standard 210/240

BLOWER PERFORMANCE

MODEL	BLOWER TAP	CFM @ ext. Static Pressure in in. wc without filter, dry coil							
		0.1	0.2	0.3	0.4	0.5	0.6	0.7	0.8
TARG24001M	2	1350	1310	1270	1210	1140	1080	1020	950
	3	1110	1080	1050	1000	970	920	870	800
	4 ¹	970	950	920	890	850	820	770	710
	5 ¹	840	820	800	770	750	720	680	620
TARG36001M	2	1460	1380	1280	1190	1100	990	880	760
	3	1350	1280	1200	1130	1060	950	870	750
	4 ¹	1080	1030	960	900	830	750	700	650
TARG42001M	2	1790	1740	1670	1590	1510	1410	1310	1210
	3	1500	1470	1430	1370	1310	1240	1140	1010
	4 ¹	1070	1050	1010	980	920	870	820	690
TARG48001M	2	1970	1890	1790	1690	1600	1510	1400	1280
	3	1730	1690	1600	1540	1450	1360	1270	1150
	4 ¹	1520	1480	1430	1370	1310	1230	1140	1050
TARG60001M	1	2240	2200	2140	2100	2060	2020	1980	1950
	2	1920	1870	1820	1770	1720	1670	1450	1360
	3	1400	1320	1260	1200	1120	1060	980	900

¹ TAPs 4 & 5 are for Electric Heat. Refer to rating plate for proper speed selection.

COOLING PERFORMANCE - EXTENDED RATINGS

Outdoor Model	Indoor Temp DB/ WB °F	Outdoor Temperature - DB °F														
		65°			82°			95°			105°			115°		
		Btuh	S/T	kW	Btuh	S/T	kW	Btuh	S/T	kW	Btuh	S/T	kW	Btuh	S/T	kW
TARG24001M	85/72	31,700	0.62	1.45	29,100	0.63	1.73	27,100	0.64	1.95	25,000	0.71	2.13	22,900	0.78	2.31
	80/67	28,600	0.68	1.45	25,700	0.71	1.72	23,600	0.73	1.98	22,200	0.78	2.15	20,900	0.84	2.33
	75/63	26,100	0.70	1.46	24,000	0.72	1.75	22,300	0.75	1.96	20,800	0.81	2.15	19,400	0.87	2.34
	75/57	22,400	1.00	1.46	20,800	1.00	1.75	19,600	1.00	1.98	19,100	1.00	2.16	18,700	1.00	2.35
TARG36001M	85/72	45,000	0.68	2.20	41,300	0.67	2.58	38,400	0.67	2.87	36,100	0.71	3.19	33,700	0.76	3.50
	80/67	41,200	0.73	2.20	37,400	0.73	2.53	34,500	0.76	2.86	32,800	0.79	3.18	31,100	0.82	3.50
	75/63	38,500	0.75	2.19	35,300	0.78	2.58	32,900	0.80	2.87	31,000	0.83	3.18	29,100	0.85	3.49
	75/57	35,500	1.00	2.19	33,000	1.00	2.57	31,000	1.00	2.87	29,500	1.00	3.18	27,900	1.00	3.49
TARG42001M	85/72	53,600	0.63	2.66	50,200	0.65	3.14	47,600	0.67	3.51	43,600	0.73	3.84	39,500	0.79	4.18
	80/67	50,200	0.69	2.65	46,000	0.73	3.08	42,700	0.75	3.50	39,500	0.81	3.84	36,300	0.87	4.19
	75/63	47,200	0.73	2.64	42,800	0.76	3.10	39,500	0.79	3.45	36,600	0.84	3.82	33,800	0.89	4.20
	75/57	42,800	1.00	2.63	38,500	1.00	3.09	35,300	1.00	3.44	34,000	1.00	3.82	32,700	1.00	4.20
TARG48001M	85/72	64,900	0.63	3.15	58,200	0.66	3.63	53,100	0.69	3.99	48,600	0.74	4.38	44,100	0.78	4.76
	80/67	59,200	0.71	3.04	52,300	0.73	3.52	47,500	0.76	3.97	44,100	0.81	4.36	40,800	0.87	4.76
	75/63	53,200	0.74	3.02	47,400	0.78	3.51	42,900	0.81	3.89	40,500	0.85	4.32	38,000	0.89	4.75
	75/57	46,500	1.00	2.99	42,100	1.00	3.49	38,700	1.00	3.87	37,800	1.00	4.31	36,800	1.00	4.75
TARG60001M	85/72	70,300	0.63	3.50	66,100	0.64	4.19	62,800	0.65	4.72	59,100	0.70	5.27	55,500	0.76	5.82
	80/67	65,700	0.69	3.47	61,000	0.71	4.08	57,400	0.73	4.69	54,300	0.78	5.24	51,200	0.83	5.78
	75/63	61,400	0.72	3.45	56,300	0.74	4.12	52,300	0.76	4.63	50,200	0.80	5.19	48,000	0.85	5.75
	75/57	54,500	1.00	3.42	50,100	1.00	4.09	46,700	1.00	4.61	46,300	1.00	5.17	45,900	1.00	5.73

HEAT STRIP ELECTRICAL

MODEL NO.	HEATER MODEL	Unit Supply Voltage Single Phase	Heater kW	"Min. Circuit Ampacity 1"	"Max. Fuse / HACR Brkr. 1"	"Min. Circuit Ampacity 2"	"Max. Fuse / HACR Brkr. 2"	"Min. Circuit Ampacity Single Point"	"Max. Fuse / HACR Brkr. Single Point"
TARG24001M	PHK05BP-1	240	5	27.7	30	-	-	27.7	30
		208	3.8	24.3	25	-	-	24.3	25
	PHK07BP-1	240	7.5	40.8	45	-	-	40.8	45
		208	5.6	35.6	40	-	-	35.6	40
	PHK10BP-1	240	10	53.8	55	-	-	53.8	55
		208	7.5	46.8	50	-	-	46.8	50
TARG36001M	PHK05BP-1	240	5	28	30	-	-	28	30
		208	3.8	24.6	25	-	-	24.6	30
	PHK07BP-1	240	7.5	41.1	45	-	-	41.1	45
		208	5.6	35.9	40	-	-	35.9	40
	PHK10BP-1	240	10	54.1	55	-	-	54.1	55
		208	7.5	47.1	50	-	-	47.1	50
	PHK15CP-1	240	15	54.1	55	26	30	80.1	90
		208	11.3	47.1	50	22.6	25	69.7	70
TARG42001M	PHK05BP-1	240	5	28.8	30	-	-	28.8	40
		208	3.8	25.4	30	-	-	25.4	40
	PHK07BP-1	240	7.5	41.9	45	-	-	41.9	45
		208	5.6	36.7	40	-	-	36.7	40
	PHK10BP-1	240	10	54.9	55	-	-	54.9	55
		208	7.5	47.9	50	-	-	47.9	50
	PHK15CP-1	240	15	54.9	55	26	30	80.9	90
		208	11.3	47.9	50	22.6	25	70.5	80
	PHK20CP-1	240	20	54.9	55	52.1	60	107	110
		208	15	47.9	50	45.1	50	93	100
TARG48001M	PHK05BP-1	240	5	28.8	30	-	-	28.8	40
		208	3.8	25.4	30	-	-	26.9	40
	PHK07BP-1	240	7.5	41.9	45	-	-	41.9	45
		208	5.6	36.7	40	-	-	36.7	40
	PHK10BP-1	240	10	54.9	55	-	-	54.9	55
		208	7.5	47.9	50	-	-	47.9	50
	PHK15CP-1	240	15	54.9	55	26	30	80.9	90
		208	11.3	47.9	50	22.6	25	70.5	80
	PHK20CP-1	240	20	54.9	55	52.1	60	107	110
		208	15	47.9	50	45.1	50	93	100
TARG60001M	PHK05BP-1	240	5	33.6	35	-	-	38.9	60
		208	3.8	30.2	35	-	-	38.9	60
	PHK07BP-1	240	7.5	46.7	50	-	-	46.7	60
		208	5.6	41.5	45	-	-	41.5	60
	PHK10BP-1	240	10	59.7	60	-	-	59.7	60
		208	7.5	52.7	55	-	-	52.7	60
	PHK15CP-1	240	15	59.7	60	26	30	85.7	90
		208	11.3	52.7	55	22.6	25	75.3	80
	PHK20CP-1	240	20	59.7	60	52.1	60	111.8	125
		208	15	52.7	55	45.1	50	97.8	100

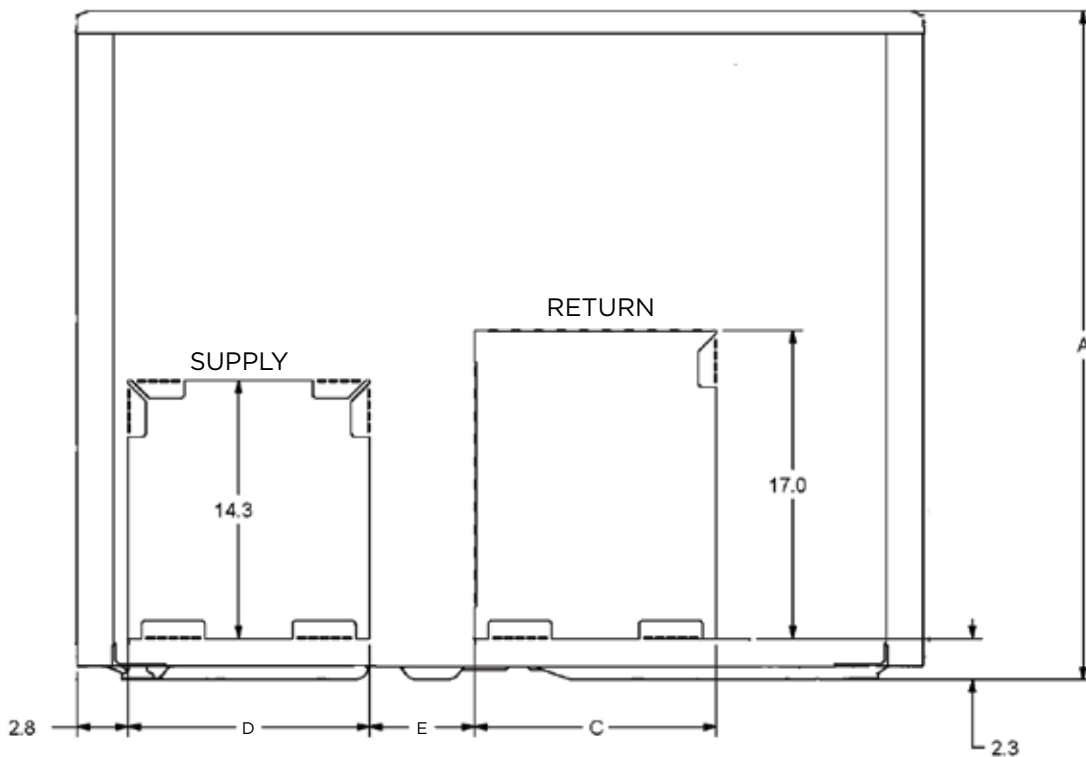
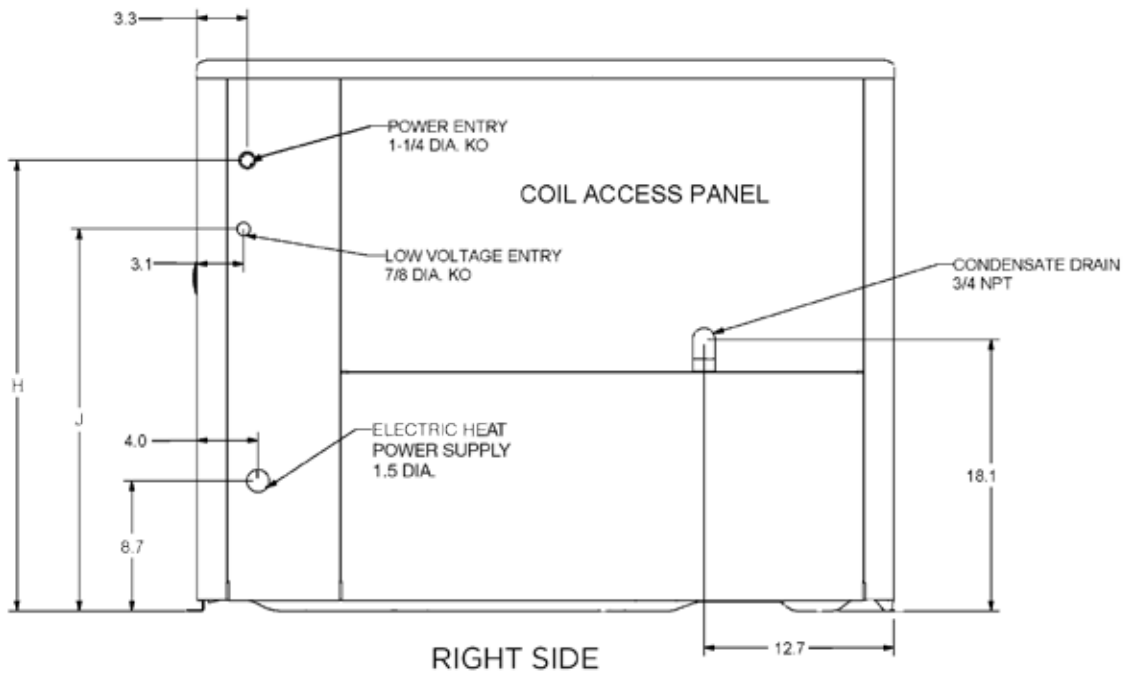
ACCESSORIES

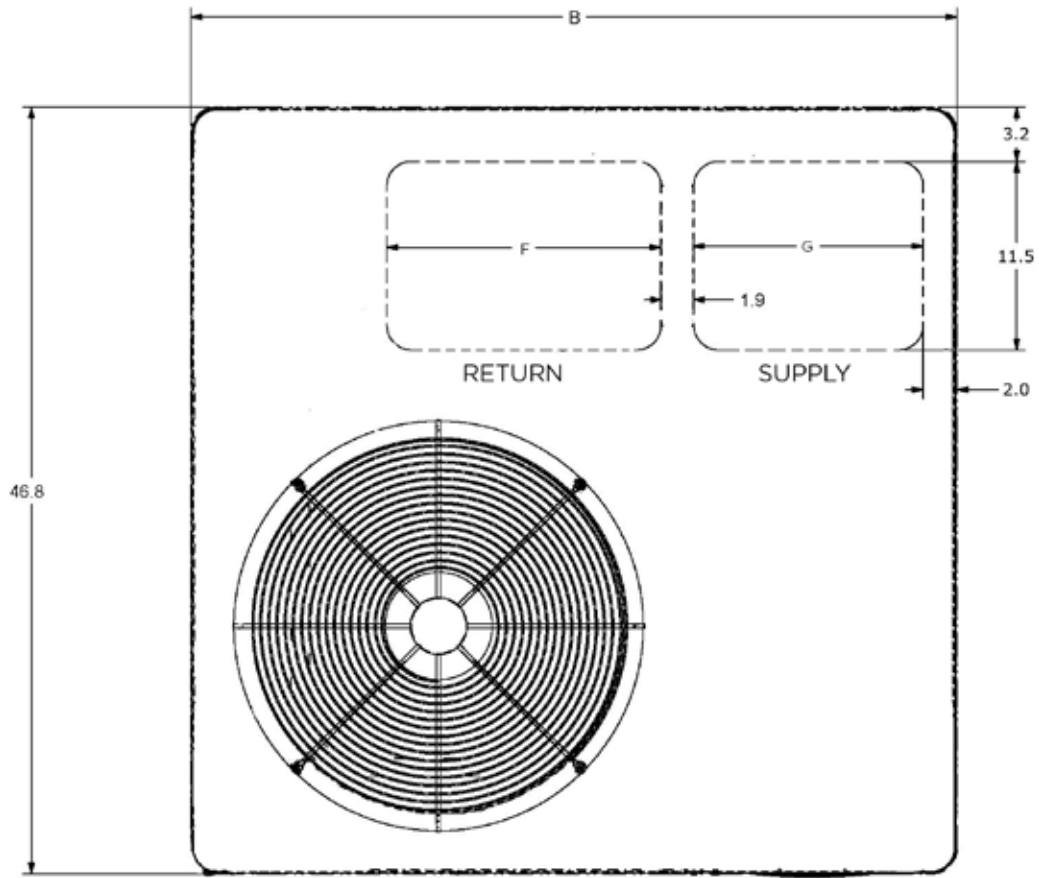
Description	Where Used	Kit Number
Compressor Crankcase Heater	All	11X27
Compressor Hard Start Kit	24,36,60	10J42
Compressor Hard Start Kit	42,48	88M91
Compressor Timed-Off Control	All	47J27
Down Flow Conversion - ACONVR836	24,36	ACONVR836
Down Flow Conversion - ACONVR837	42,48,60	ACONVR837
Drain pan overflow switch	All	11U75
Electric Heater 5KW - PHK05BP	All	10W47
Electric Heater 7.5KW - PHK07BP	All	10W48
Electric Heater 10KW - PHK10BP	All	10W49
Electric Heater 15KW - PHK15CP	36,42,48,60	10W50
Electric Heater 20KW - PHK20CP	42,48,60	10W51
Filter Rack Kit	24,30,36	11U73
Filter Rack Kit	42,48,60	11U74
Lifting Brackets	All	11U76
Roof Curb	24,36	11U78
Roof Curb	42,48,60	11U79
Sideflow Rect. to 14" Rounds Duct Adapter (Qty 25 sets)	24,36	R104617-01
	42,48,60	R104618-01
8" Height Full Perimeter Curb	24,36	14W71
8" Height Full Perimeter Curb	42,48,60	14W72
14" Height Full Perimeter Curb	24,36	14V68
14" Height Full Perimeter Curb	42,48,60	14V69

Single Point Power		
5 KW ASPWR813-1	All	13W88
7.5 KW ASPWR814-1	All	13W89
10 KW ASPWR815-1	All	13W90
15-20 KW ASPWR816-1	36,42,48,60	13W91

DIMENSIONS (IN.)

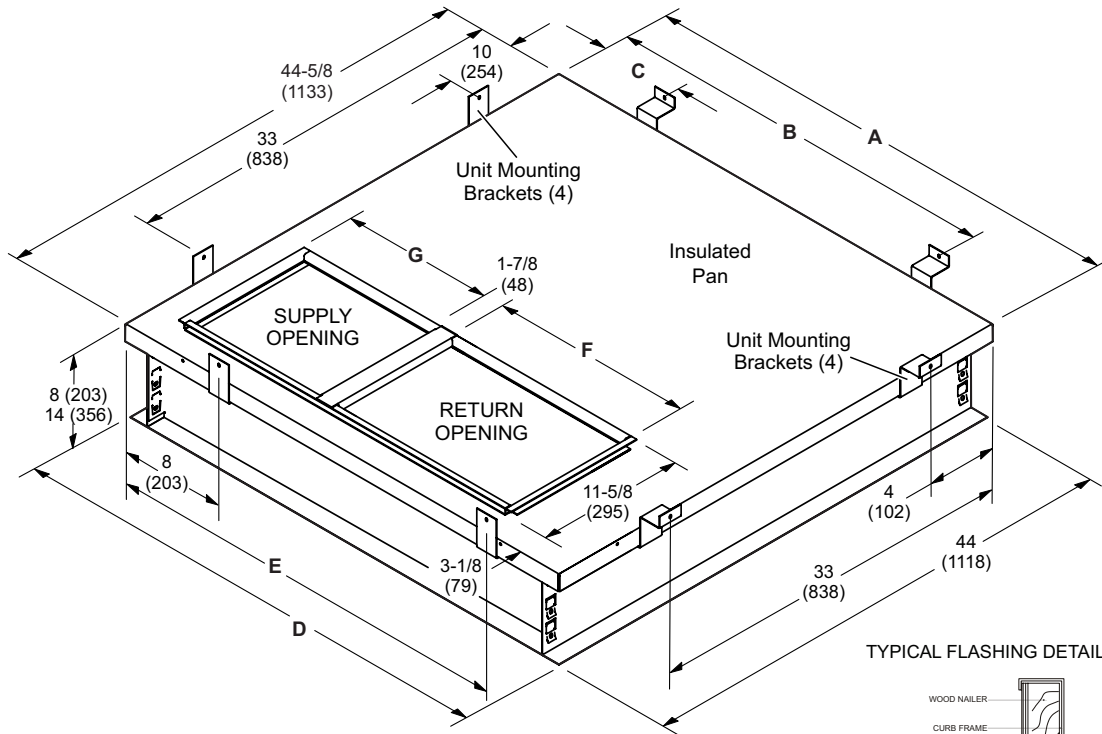
Model	A	B	C	D	E	F	G	H	J
TARG24001M	36.82	46.77	13.33	13.31	5.86	16.75	14	30.13	25.54
TARG36001M									25.54
TARG42001M	40.88	55.27	18.14	18.14	4.67	19.75	19.5	34.13	29.54
TARG48001M									29.54
TARG60001M									29.54





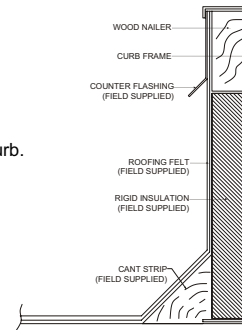
TOP - WITH BOTTOM DUCT SHOWN

ROOF CURB DIMENSIONS



NOTE - Roof deck may be omitted within confines of curb.

TYPICAL FLASHING DETAIL



Usage	A		B		C		D		E	
	in.	mm	in.	mm	in.	mm	in.	mm	in.	mm
24, 30, 36	44-5/8	1133	43	1092	18	457	44	1118	37	940
42, 48, 60	53-1/8	1349	51	1295	24	610	52-1/2	1334	41	1041
Usage	F		G							
	in.	mm	in.	mm						
24, 30, 36	16-3/4	356	14.00	425						
42, 48, 60	19-3/4	495	19.50	502						

Due to ongoing product improvements, specifications and dimensions are subject to change and correction without notice or incurring obligations. Determining the application and suitability for use of any product is the responsibility of the installer. Additionally, the installer is responsible for verifying dimensional data on the actual product prior to beginning any installation preparations.

Third party incentive and rebate programs have precise requirements as to product performance and certification. All products meet applicable regulations in effect on date of manufacture; however, certifications are not necessarily granted for the life of a product. Therefore, it is the responsibility of the applicant to determine whether a specific model qualifies for these incentive/rebate programs.